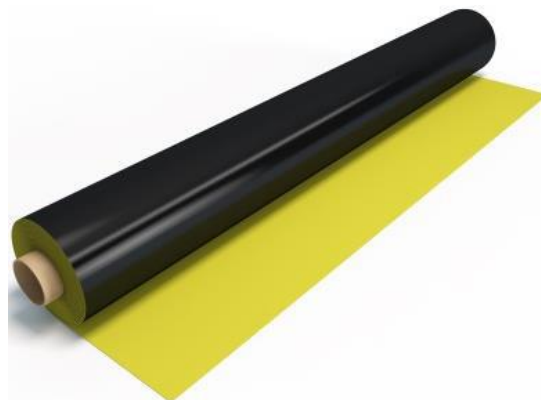


#### Technical data sheet

### Synthetic waterproofing membrane LOGICBASE V-SL

#### Product description:

LOGICBASE V-SL is a homogenous unreinforced synthetic membrane. It is produced by co-extrusion process from polyvinylchloride (PVC), plasticizers and additives. One side of the membrane is yellow, another side is black. Yellow signal layer allows detection of damages of waterproofing in the process of construction. The product is not UV-resistant.



#### Application area:

The material is designed for waterproofing bridgeworks, tunnels, basements of buildings and structures. Membrane keeps flexibility at low temperatures and can be applied in all climatic zones.

**Thickness:** 1.5, 2.0 mm

#### General features:

- Yellow signal layer;
- Fire-free method for installation;
- Roll length by order;
- High tensile strength;
- Retains elasticity at low temperature;
- Outstanding weldability;
- Recyclable.

#### Application method:

LOGICBASE V-SL membrane should be welded using hot air produced by automatic welding equipment. Contact with all materials containing bitumen or solvents should be avoided. Direct contact with polymeric materials made of polystyrene (EPS, XPS) is not allowed.

#### Product technical data:

Characteristics	Performance	Requirement clauses in EN 13967:2012	Test method
Reaction to fire	Class E	5.16	EN 13501-1
Watertightness	Pass (24h/60 kPa)	5.6	EN 1928 B
Tensile strength, longitudinal / transversal	≥ 16 MPa / ≥ 15 MPa	5.14	EN 12311-2
Resistance to static loading	≥20 kg	5.13	EN 12730 B
Impact resistance (rigid sub.) / (soft sub.)	1,5 mm: ≥700 mm / ≥1000 mm 2,0 mm: ≥1400 mm / ≥1800 mm	5.7	EN 12691
Tear resistance	≥150 N	5.10	EN 12310-1

<b>Joint strength</b>	≥ 700 N/50 mm	5.11	EN 12317-2
<b>Durability – Watertightness after artificial ageing</b>	Pass (>90 days)	5.8.1	EN 1296; EN 1928 B
<b>Durability – Watertightness after exposure to chemicals</b>	Pass (>90 days)	5.8.2	EN 1847; EN 1928 B
<b>Dangerous substances</b>	NPD	5.17	
<b>Elongation</b>	350%, not less than	–	EN 12311-2
<b>Density</b>	1,5 mm: 2.0 kg/m <sup>2</sup> 2,0 mm: 2.7 kg/m <sup>2</sup>	–	EN 1849-2

**Storage:**

Rolls should be kept in dry enclosed space, horizontally, no more than three rows in height, in original package.

**Transportation:**

In covered transport, on pallets, horizontally. No more than three rows in height.

**Package information:**

Synthetic membranes are delivered on wooden pallets. Every roll is wrapped in non-transparent polyethylene film, which protects them from UV radiation.