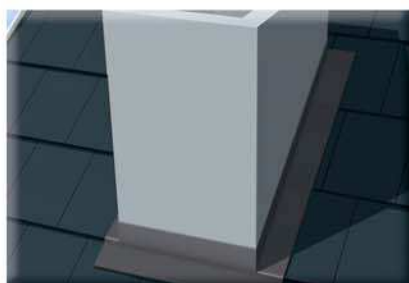
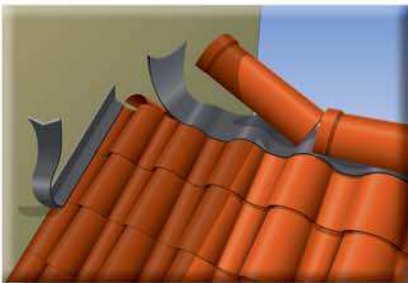
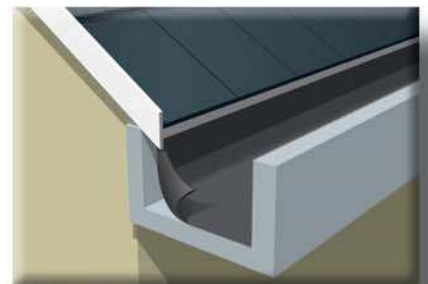
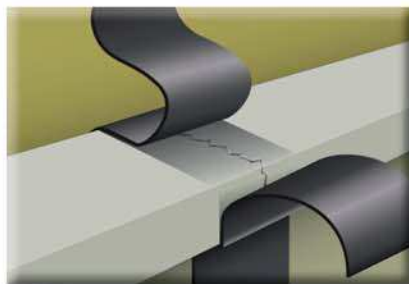


AdeFlex

Self-adhesive waterproofing tapes



Self-adhesive waterproofing bitumen tapes

The Adeflex self-adhesive tapes are elastic, flexible and strong. They are used for waterproofing cracks, sloped roofs, gutters, greenhouses and glass constructions as well. They create an impervious shield, preventing water penetration, while protecting from corrosion. All types of our sealing tapes are easy to handle and apply, minimizing cost, time and efforts.



AdeFlex



Fields of application

Waterproofing:

- Joints between sloped roofs and vertical walls • Cracks in upstands, flat roofs, parapets etc.
- Gutters from metal, concrete and mortar • Metallic roofs
- Pitched roofs details • Vent pipes
- Skylights and roof windows details • Chimney details • Glass constructions etc.

Also used for repair and protection of:

- Metallic Gutters • Fiber cement panels
- Metallic pipes, especially when buried into the ground

Industry sectors:

- Air ducts and fan coils • Containers and trailers • Prefabricated construction
- Metallic buildings

How to apply the Adeflex tapes

The minimum temperature when applied, should be at least +5°C.

The substrate should be dry and clean. Apply first the special primer (consumption rate: 0,3 - 0,5 lit depending on the substrate absorptivity). Wait for 20' - 40' (depending on the ambient temperature). Remove the silicone paper and stick exerting pressure.

If temperature is marginal, you can use a small torch.

ADEFLEX BUTYL TAPES

The Butyl self-adhesive tapes from Adeflex have the same field of applications as bitumen tapes but they possess additionally the following advantages:

- They can be used at much lower temperatures (-10°C) in comparison with +5°C (for bitumen tapes).
- The adhesion is much easier and stronger in low temperatures.
- Self-recovery, if punctured.

The Adeflex Butyl adhesive tapes are available in the same sizes, colors and packaging as the Adeflex bitumen tapes.





AdeFlex

Advantages of Adeflex bitumen tapes

- **Adhesion:**

Excellent adhesion to all kind of surfaces. Especially for porous surfaces such as plaster and concrete, it is recommended the use of a special asphalt primer.

- **Resistance:**

Extremely resistant against tearing and piercing. They resist ageing and mechanical solicitations.

- **Elasticity:**

Very elastic, made from a special SBS blend. They can follow all substrate irregularities.

- **Application:**

Simple application. Just peel and stick!

- **Waterproofing:**

Totally waterproof due to the elastomeric blends.

Technical characteristics

Asphaltic mass: SBS **Thickness:** 1,1mm **Weight:** 1,15 Kg/m²

Upper face: Reinforced aluminium film **Lower face:** Siliconized paper

Elongation at break: 220%

- **Very big size assortment:**

Width: 5 – 10 – 15 – 20 – 30 – 60 – 100cm. Length : is 10m for all tapes.

- **Protection with special aluminium film:**

The special, reinforced film guarantees the long operational life of the Adeflex tapes

- **Colors:**

Natural aluminium and red clay for tiled roofs.

Availability

The Adeflex bitumen tapes are available in 7 sizes and 2 colors.

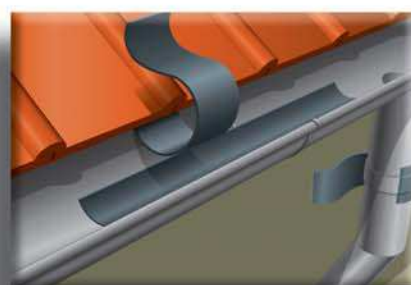
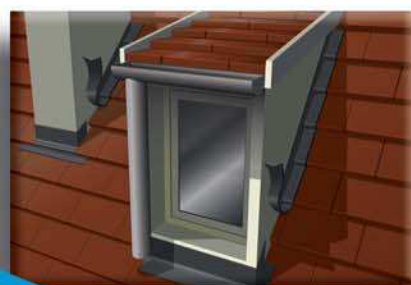
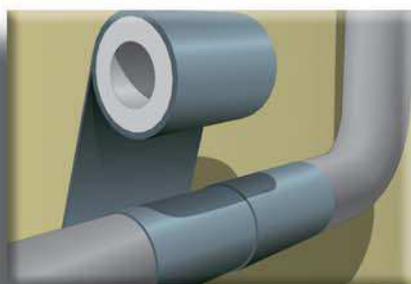
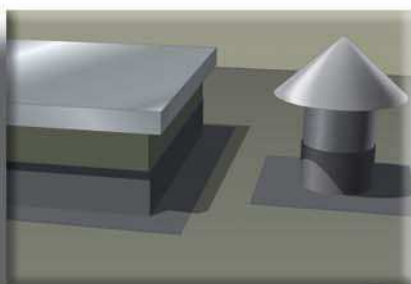
Packaging

cm	pieces/box
5	24
10	12
15	8
20	4
30	4
60	1
100	1



AdeFlex

Self-adhesive waterproofing tapes



Technical Support and service

Our company's primary target is to distribute premium class building products establishing long-term cooperation, only with leading manufacturers, around the planet.

Visit our main website www.macon.gr to find info, tips and updates concerning our range of advanced building materials.

For technical assistance please visit our offices or contact us via email to info@macon.gr or call as at +30 2310 428900.



find us on

facebook.com/macongroup



follow us

twitter.com/macongroup



scan to visit
our website



Headquarters:

28 M. Pselou str. P.O. 54655

Kifisia, Thessaloniki

T: 2310 428900

F: 2310 415100

info@macon.gr

www.macon.gr