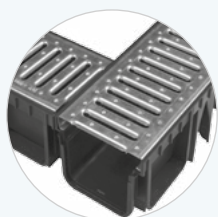


COLORI / COLORS



Esempio di assemblaggio canalette



Scarichi inferiori:
Ø75 - Ø100 e Ø80 - Ø100

CANALETTA "NOR"

Prodotta da GRUPPO STAMPLAST è ideale come sistema di drenaggio delle acque semplice ed efficace.

Garantisce la giusta resistenza e semplicità nella posa in opera.

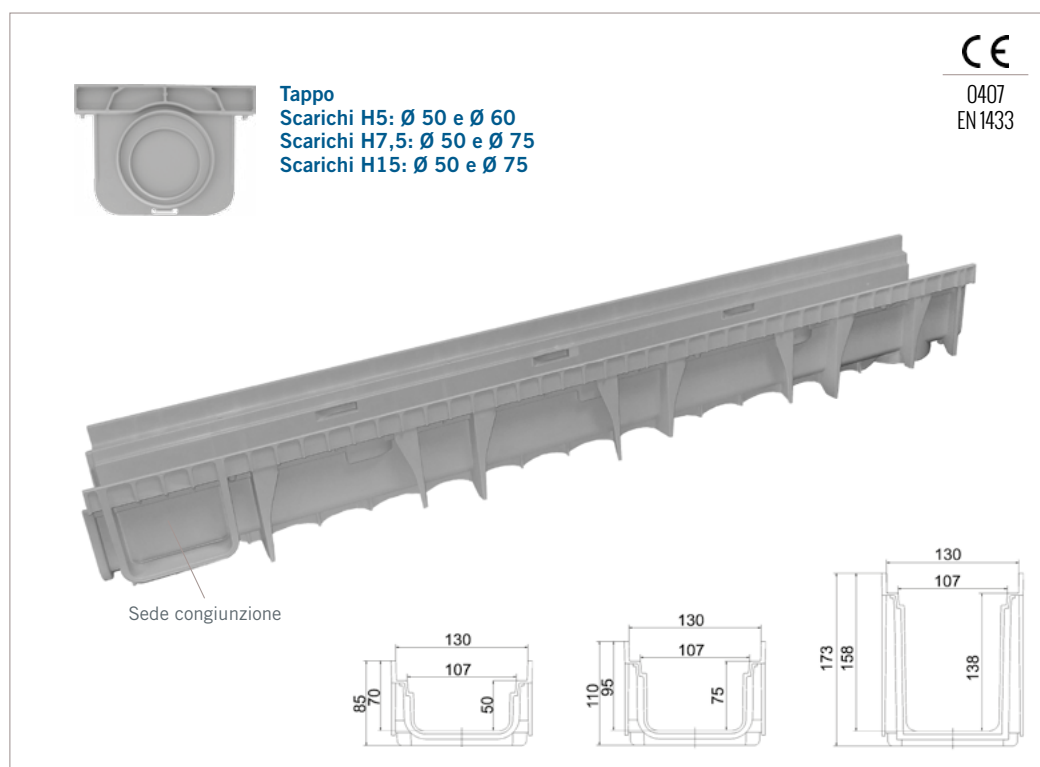
Materiale: Polipropilene Copolimero caricato con anti UV.

CHANNEL DRAIN "NOR"






Manufactured by GRUPPO STAMPLAST, it is ideal as a simple and effective water drainage system.

It ensures correct resistance and simplicity during the installation.

Material: Stabilized Polypropylene Copolymer with anti UV.



SCHEDA ORDINE PRODOTTO / PRODUCT ORDER DATA SHEET

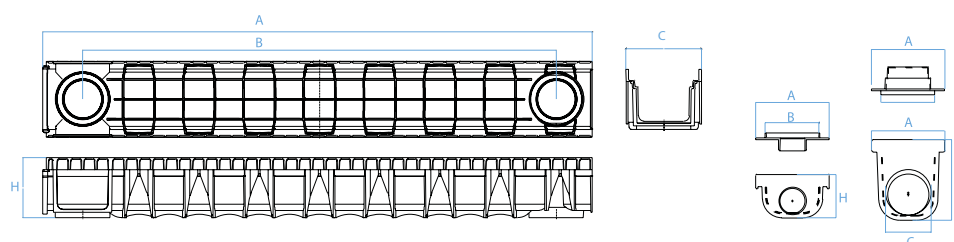
COD.	MOD.*					
CN13-07	13x100 h5	●	1	248	100x120x245	0,860 kg/pz
CN13-09	13x100 h7,5	●	1	184	100x120x245	1,180 kg/pz
CN13-10	13x100 h15	●	1	112	100x120x245	1,380 kg/pz
CN13-07A	13x100 h5	●	1	248	100x120x245	1,200 kg/pz
CN13-09A	13x100 h7,5	●	1	184	100x120x245	1,330 kg/pz
CN13-11	13x100 h15	●	1	112	100x120x245	1,980 kg/pz
TP13-03	Tappo 13x100 h5	●	150	19200	100x120x220	0,028 kg/pz
TP13-04	Tappo 13x100 h7,5	●	100	12800	100x120x220	0,044 kg/pz
TP13-05	Tappo 13x100 h15	●	50	6400	100x120x220	0,060 kg/pz
TP13-06	Tappo 13x100 h5	●	150	19200	100x120x220	0,034 kg/pz
TP13-07	Tappo 13x100 h7,5	●	100	12800	100x120x220	0,052 kg/pz
TP13-08	Tappo 13x100 h15	●	50	6400	100x120x220	0,080 kg/pz

*MEASURES IN CENTIMETERS

SCHEDA TECNICA PRODOTTO / TECHNICAL SHEET

MOD.*	A*	B*	C*	H*	Classe di carico / Load class
13x100 h5	100	86,7	13,8	8,5	A15
13x100 h7,5	100	86,7	13,8	11	A15
13x100 h15	100	86,7	13,8	17,3	A15
Tappo 13x100 h5	13,8	9,3	5 - 6	7,3	--
Tappo 13x100 h7,5	13,8	9,3	5 - 7,5	9,9	--
Tappo 13x100 h15	13,8	9,3	5 - 7,5	16,1	--

*MEASURES IN CENTIMETERS



DOP www.gruppostamplast.it

DICHIARAZIONE DI PRESTAZIONE
DECLARATION OF PERFORMANCE